

# ENVIRONMENTAL GUIDE

## PROTECTED NATURAL SPECIES

Dear participants and spectators,

Since the beginning of Club La Santa (1978), its founder Ejlif Krogager wanted to build something new in perfect harmony with the landscapes on the island of Lanzarote. His respect and admiration for environment, found in each of the sports projects that have been promoted by Club La Santa, have fostered the responsible practice of sports in close contact with nature.

All Club La Santa sports events are designed with the utmost respect towards the environment, making them compatible with the conservation of the spaces in which they take place, taking all the necessary preventive measures to make them viable, giving the possibility of experiencing unique landscapes to the participants. The 4 Stage MTB race Lanzarote has been designed with the aim of offering to all participants the best courses in harmony with the environment.

Our participants have the privilege of racing in such an amazing natural environment; we therefore would like to give several environmental tips and rules, in order to protect the special habitats where you will pass by, as well as the natural resources of the island of Lanzarote.

Thank you for your collaboration.

The Race Organization  
Club La Santa



## GUIDE TO GOOD ENVIRONMENTAL PRACTICES

The 4 Stage MTB race Lanzarote has been ascertained by the Island's Environment Council as favorably compatible with the means of protection of the protected spaces of the Canary Islands Network of Protected Natural Spaces and the spaces of the Natura 2000 Network.

Below is a guide to good environmental practices according to the location of the race. The intention of this guide is to contribute to the conservation of the protected areas, in addition to informing the organizers, participants, spectators, etc. about the importance of the protected areas as essential places for our health and quality of life, among others.

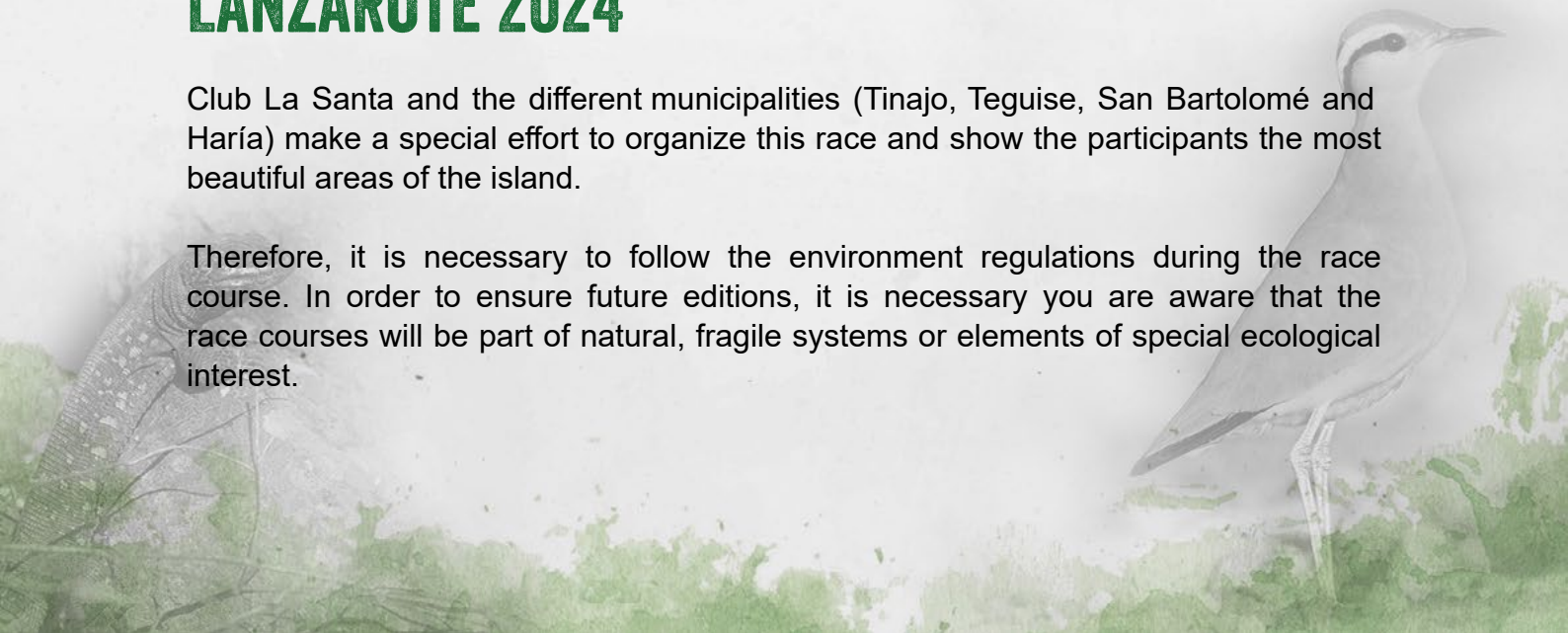
Sharing this guide will help:

- Minimize the possible impact on natural and cultural resources of the protected spaces where the race is held, enhancing the event's participants and organizers environmental awareness.
- Have a positive impact on the sustainable development of local populations of these territories.

## COMMITMENT TO GOOD BEHAVIOR AND ENVIRONMENTAL GUIDE 4 STAGE MTB RACE LANZAROTE 2024

Club La Santa and the different municipalities (Tinajo, Tegüise, San Bartolomé and Haría) make a special effort to organize this race and show the participants the most beautiful areas of the island.

Therefore, it is necessary to follow the environment regulations during the race course. In order to ensure future editions, it is necessary you are aware that the race courses will be part of natural, fragile systems or elements of special ecological interest.



## PARTICIPANTS

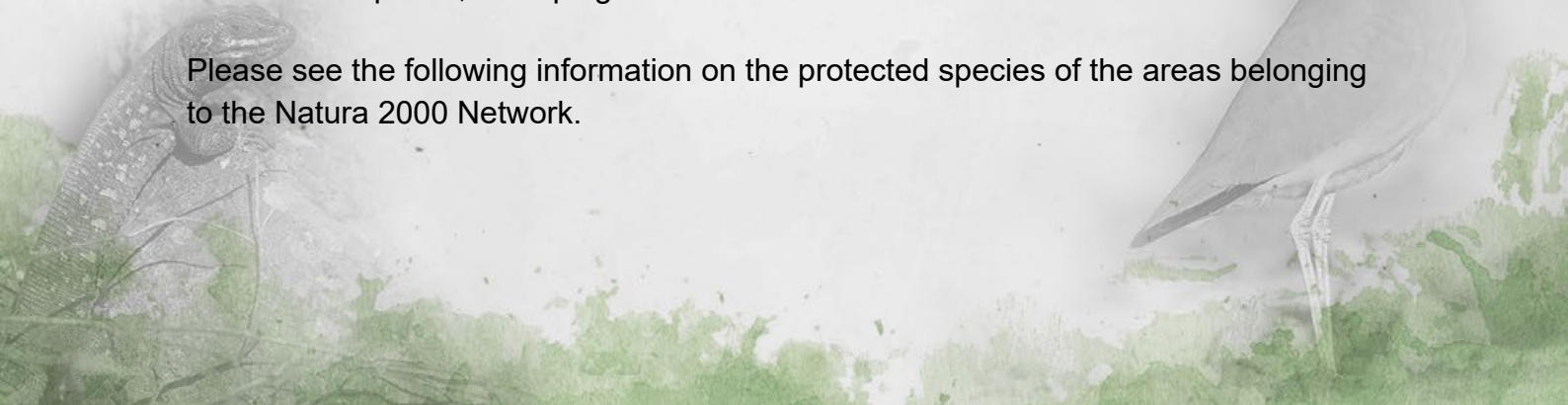
I am aware that my participation in the 4 Stage Mountain Bike Race Lanzarote commits me to respect as much as possible the race courses which are part of an environmentally sensitive area, as per the local Government's regulation of the Protected Natural Area. For all these reasons I will respect and keep in mind the following requirements:

- I will inform my friends or family members who accompany me to enjoy the event, respecting the established rules and the organization's advice.
- I will not leave the routes established and marked by the organization under any circumstances.
- I promise NOT to throw any rubbish or waste material included gels or other containers throughout the whole event. If I have to throw anything away, I will do it at the aid stations.
- During my race I will avoid making noise, shouting or using any sound equipment.
- I will not leave any marks in the environment under any circumstances.

## PROTECTED NATURAL SPACES

The Canary Islands Network of Protected Natural Spaces and the spaces of the Natura 2000 Network has taken the necessary conservation measures to prevent the deterioration of the habitats and the species present in these spaces, keeping them in a state of favorable conservation.

Please see the following information on the protected species of the areas belonging to the Natura 2000 Network.



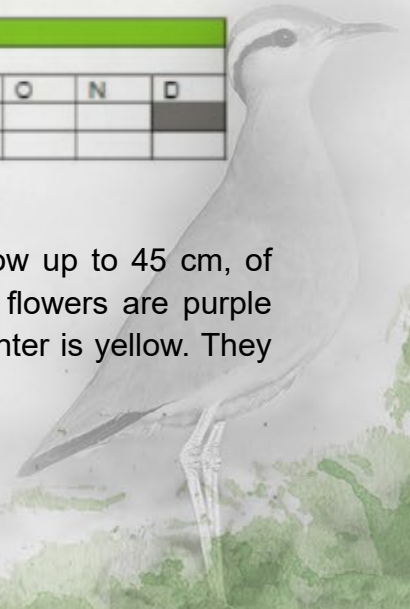
## AREA OF SPECIAL CONSERVATION MALPAÍS DEL CUCHILLO ES7010065.

There is a protected species of plant: *Caralluma burchardii*. (Annex II. 92/43/CEE). The *Caralluma*, known as the Cuernúa, is a native plant of the Canary Island, only present on the islands of Lanzarote, Fuerteventura, La Graciosa, Montaña Clara, Alegranza and Lobos, in addition to Morocco. It is located in rocky and sandy environments, in refuge from the prevailing winds.



FENOLOGÍA DE LA CUERNÚA												
Meses del año												
	E	F	M	A	M	J	J	A	S	O	N	D
Floración												
Fructificación												

It is a succulent with aerial stems, usually quadrangular that grow up to 45 cm, of variable color from brown green to gray. The small bell-shaped flowers are purple brown, star-shaped, the edges are covered with hairs and the center is yellow. They release a putrid smell, to attract pollinating insects.



The flowering of this species is scarce since it depends on the weather conditions. At this time of the year it is in bloom.

The reptile species *Gallotia atlantica* and the birds *Burhinus Oedicephalus*, *Chlamydotis undulata fuertaventurae*, *Cursorius cursor* and *Pandion haliaetus* are also present in this area.



*Gallotia atlántica.*



Alcaraván común.



Hubara canaria. *Chlamydotis undulata*  
*Fuertaventurae*



Corredor Sahariano, *cursorius cursor*



Águila pescadora, *Pandion haliaetus*.

## AREA OF SPECIAL CONSERVATION LOS VOLCANES ES7010046.

The race will pass through:

- Thermo-Mediterranean scrub
- Natural lava fields

This type of habitat corresponds to the volcanic surfaces resulting from the recent eruptive activity. It includes lava surfaces of very varied morphology, recent pyro clasts (especially lapilli and slag). These rocky substrates maintain the original eruptive morphology that defines the landscape. The fauna of recent volcanic territories is not exclusive to this type of habitat, but common with other types of arid habitat like in El Cuchillo area.

In the areas of shrubs, you can mainly find species that have developed a large number of adaptive strategies in order to survive in adverse conditions, such as the lack of water, high temperatures and insolation. Euphorbias predominate these areas.

## **IMAGES OF THE 2024 ROUTES WITH SENSITIVE AREAS MARKED**

**AREAS ALONG THE ROUTE INCLUDED WITHIN THE CANARY NETWORK OF PROTECTED NATURAL SPACES**



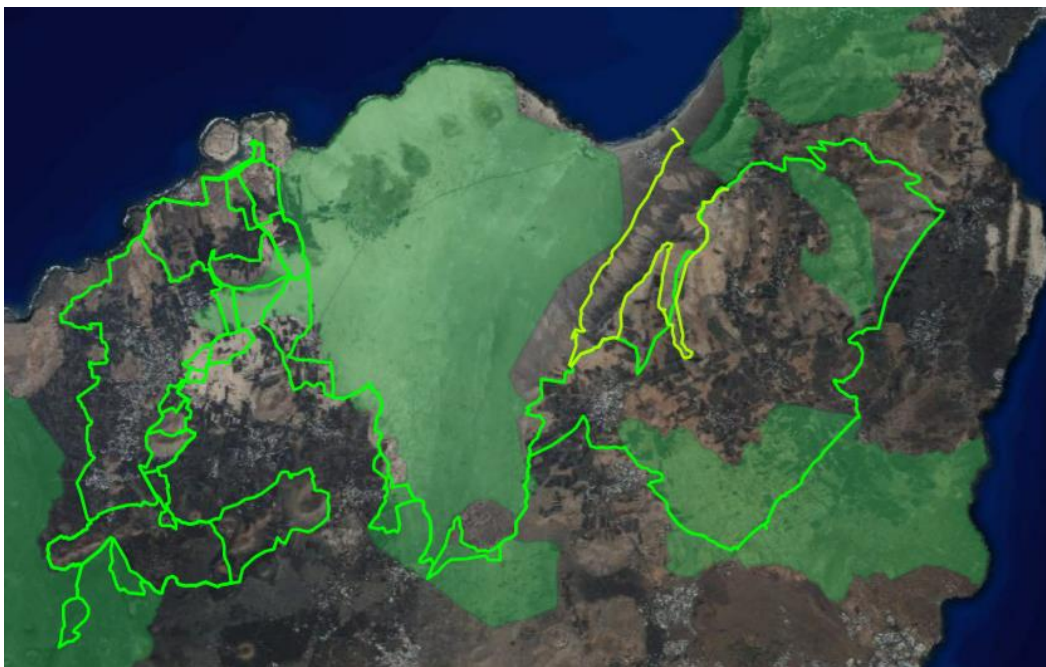
**AREAS ALONG THE ROUTE INCLUDED WITHIN SPECIAL CONSERVATION ZONES**



**AREAS OF SPECIAL PROTECTION FOR BIRDS**

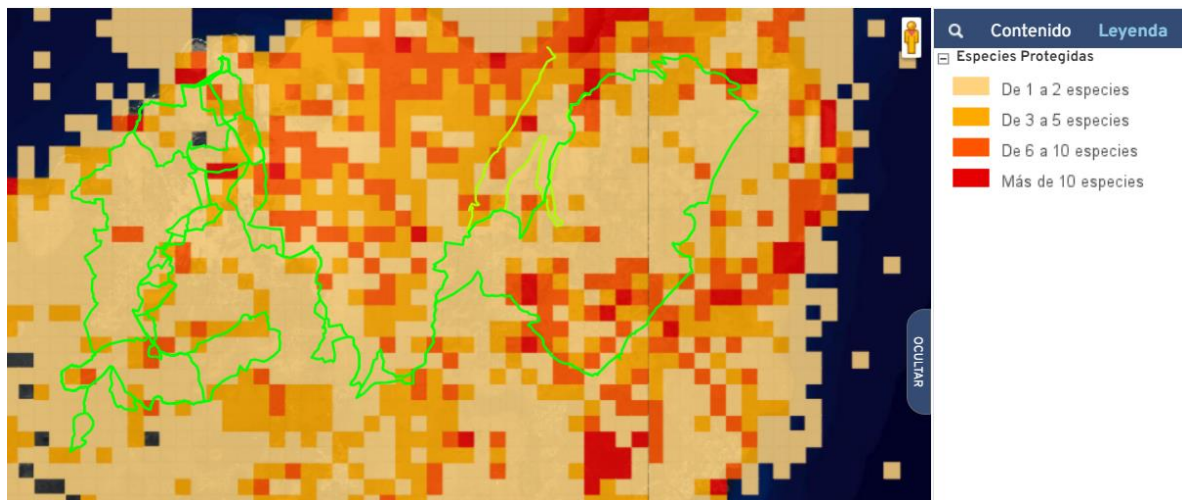


**PRIORITY AREAS FOR BREEDING, FEEDING, DISPERSAL, AND CONCENTRATION OF BIRDS**





Additionally, the route passes through many different areas that host a large number of protected species according to the **BIODIVERSITY DATABASE OF THE CANARY ISLANDS GOVERNMENT**



These spaces marked on the various maps are the sensitive areas, thus, those that the public should avoid, and participants should exercise special care for the environment.